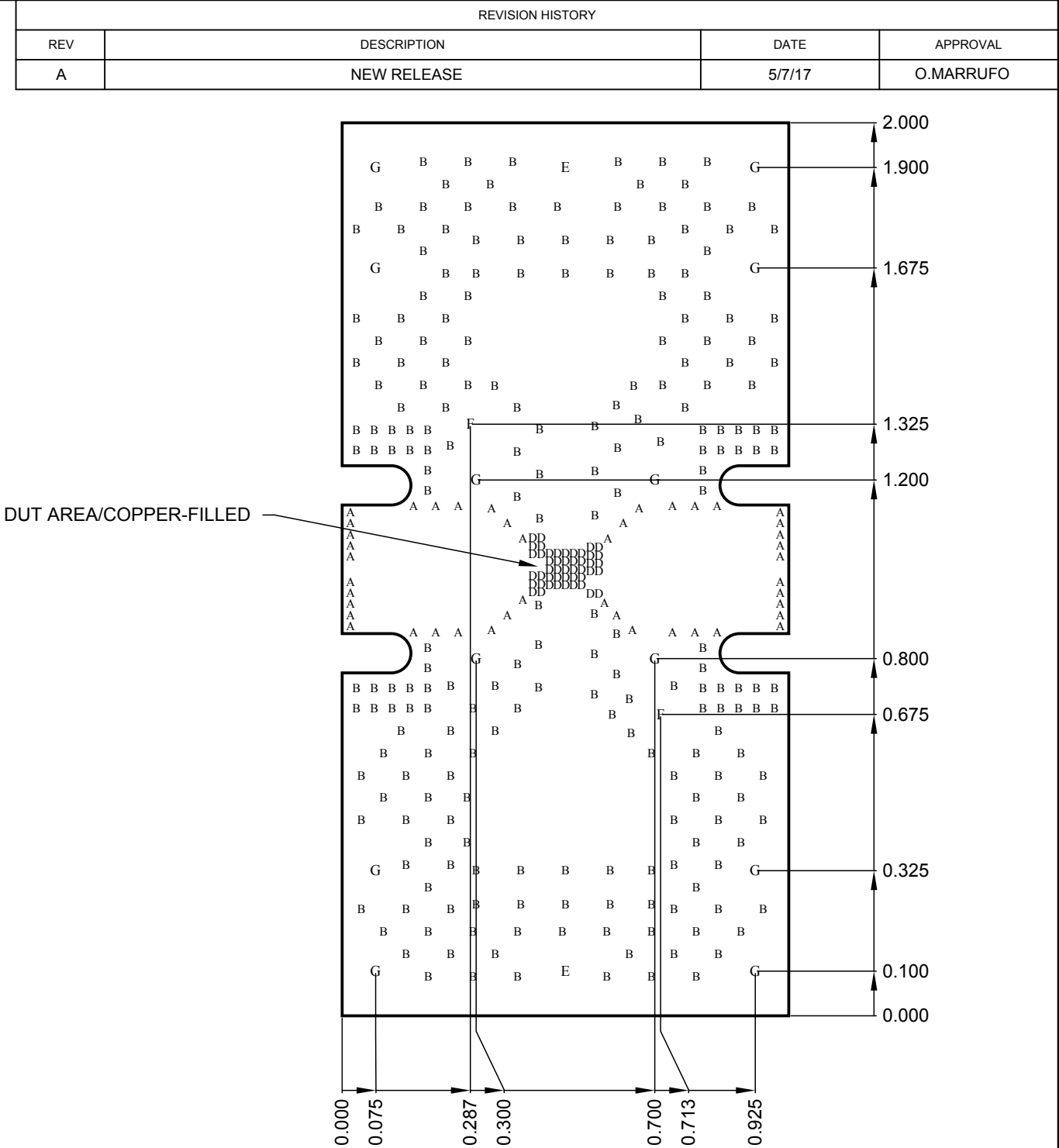


NOTES (UNLESS OTHERWISE SPECIFIED):

1. BOARD FABRICATION METHODS MUST COMPLY WITH:  
FABRICATE IN ACCORDANCE WITH IPC-6018B, per IPC-6011, CLASS 2.
2. ARTWORK FORMAT: GERBER 274X  
GERBER DATA SUPPLIED WITH DESIRED FINAL TRACE WIDTHS. PROCESS  
COMPENSATION TRACE WIDTH ADJUSTMENTS TO BE DONE BY PCB FABRICATOR
3. MATERIAL:  
NUMBER OF LAYERS: 2 LAYERS  
METAL 1 0.5oz. (PLATE TO 1.0oz)  
CORE 1: ROGERS 4003C, .008in. THICK  
METAL 2 0.5oz. (PLATE TO 1.0oz)  
SOLDERMASK TOP: LPI (LIQUID PHOTO-IMAGEABLE), GREEN OR LDI (LASER DIRECT IMAGEABLE), GREEN. MAX FINISH  
THICKNESS OF SOLDERMASK TO BE 0.001in.  
SILKSCREEN TOP: HIGH TEMPERATURE, NON-CONDUCTIVE, WHITE EPOXY BASED INK.
4. FINISH PLATING:  
METAL 1(TOP) AND METAL 2(BOTTOM):  
ELECTROLYTIC FLASH GOLD  
NICKEL PLATE per QQ-N-290, CLASS 1, GRADE G, 200µin. (5µm)  
GOLD PLATE per ASTM B 488, TYPE III, CODE A, 3-10µin. (0.08-0.25µm)
5. FINISHED BOARD THICKNESS: (0.011in) ±.003IN.
6. COPPER IS PULLED BACK 0.002in. FROM EDGE OF BOARD ON METAL 1 (TOP) AND METAL 2 (BOTTOM).
7. TOLERANCE: PC BOARD OUTLINE: ±0.002in.
8. BURRS SHALL NOT EXCEED 0.002in.
- 9 VIA PLATING/FILLING:  
A. ALL 8 MIL (A) VIAS UNDER THE DUT ARE TO BE COPPER-FILLED, OVER-PLATED AND PLANARIZED.  
FINISHED COPPER THICKNESS TO BE 0.0014 ±0.0004in.  
B. ALL OTHER PLATED THRU HOLES TO BE PLATED TO 0.0007in. MIN. THICKNESS.
10. METAL 1(TOP) AND METAL2(BOTTOM) AFTER OVERPLATING AND PLANARIZATION SHALL HAVE A MAX  
ALLOWABLE NEGATIVE FEATURE OF 0.0008in. AND A MAX ALLOWABLE POSITIVE FEATURE OF 0.0003in.
11. CONDUCTOR WIDTHS AND SPACING TO BE WITHIN 0.003in. OF CAD DATABASE.
12. SOLDERMASK IN PLATED-THRU HOLES IS ACCEPTABLE AS LONG AS IT DOES NOT EXIST ON BACKSIDE OF BOARD.
13. ALL HOLES TO BE LOCATED WITHIN ±0.003 OF CAD DATABASE.
14. NO VENDOR MARKING OR SERIALIZATION ALLOWED.
15. DELIVER BOARDS BAGGED AS SINGLES
16. NO ELECTRICAL TEST NEEDED.



UNLESS OTHERWISE SPECIFIED: DIMENSIONS ARE IN INCHES

TOLERANCES  
.XX = ±.01  
.XXX = ±.005  
.XXXX = ±.0010  
ANGLES = ± 0.5°  
INTERPRET DRAWING PER ANSI/ASME Y14.5 - 2009

THIRD ANGLE PROJECTION  
DO NOT SCALE DRAWING

SAP NO. 283343

APPROVAL AND RELEASE RECORDS MAINTAINED IN PDE

DESIGNER O.MARRUFO  
ENGR. T.HON  
MFG  
MANAGER  
Q.A.  
CAGE CODE

DATE 5/7/17  
5/7/17

PDE CONTROLLED

1CVM1

TITLE:  
PCB, TGP2615-SM EVB

SIZE B




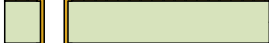

DWG. NO. TGP2615-SM-4000

REV. A

SCALE: 1:1 SHEET 1 OF 5

THIS DOCUMENT IS CONFIDENTIAL AND REPRESENTS PROPRIETARY INFORMATION, THE PROPERTY OF QORVO AND SHALL NOT BE REPRODUCED IN ANY MANNER NOR USED FOR ANY PURPOSE WHATSOEVER, EXCEPT AS SPECIFIED IN WRITING BY QORVO

Layer Stack Legend

	Material	Layer	Thickness	Dielectric Material	Type
		SILKSCREEN_TOP			Legend
	Surface Material	SOLDERMASK_TOP	0.4mil	Solder Resist	Solder Mask
	Copper	METAL1_TOP	0.7mil		Signal
	Core		8.0mil	ROGERS 4003C	Dielectric
	Copper	METAL2_BOT	0.7mil		Signal
Total thickness: 9.8mil					

Drill Table

SYMBOL	COUNT	HOLE SIZE	PLATED	VIA / PAD	DRILL LAYER PAIR
D	47	8.00(0.20)	Plated	Via	METAL1_TOP - METAL2_BOT
A	44	15.00(0.38)	Plated	Via	METAL1_TOP - METAL2_BOT
B	226	20.00(0.51)	Plated	Via	METAL1_TOP - METAL2_BOT
F	2	63.00(1.60)	Non-Plated	Pad	METAL1_TOP - METAL2_BOT
G	12	100.00(2.54)	Plated	Pad	METAL1_TOP - METAL2_BOT
E	2	120.00(3.05)	Plated	Pad	METAL1_TOP - METAL2_BOT

ALL HOLE SIZES ARE DRILLED HOLE SIZE

THIS DOCUMENT IS CONFIDENTIAL AND REPRESENTS PROPRIETARY INFORMATION, THE PROPERTY OF QORVO AND SHALL NOT BE REPRODUCED IN ANY MANNER NOR USED FOR ANY PURPOSE WHATSOEVER, EXCEPT AS SPECIFIED IN WRITING BY QORVO

SIZE	CAGE CODE	DWG. NO.	REV.
B	1CVM1	TGP2615-SM-4000	A
SCALE: 1:1		SHEET 2 OF 5	

4

3

2

1

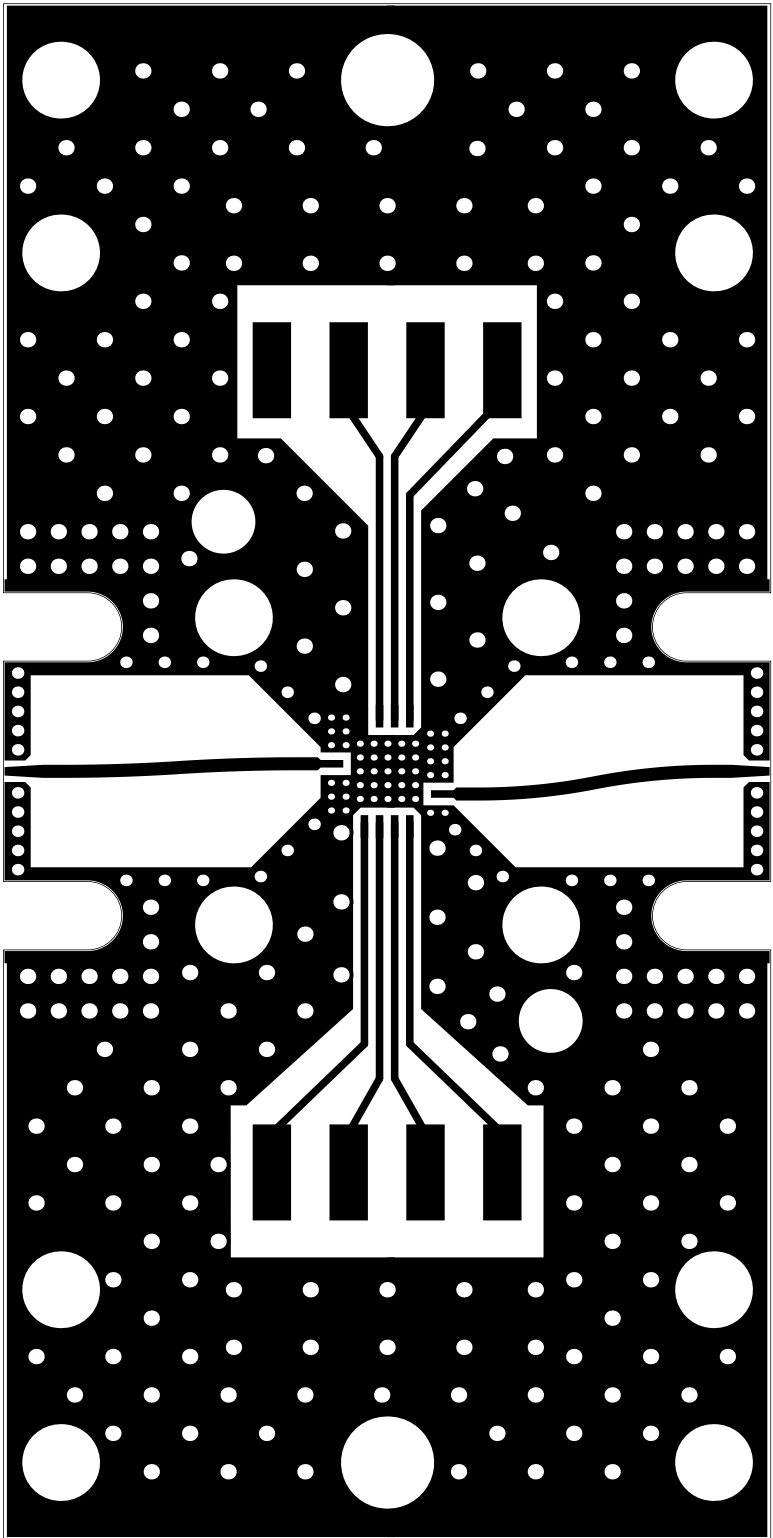
D

C

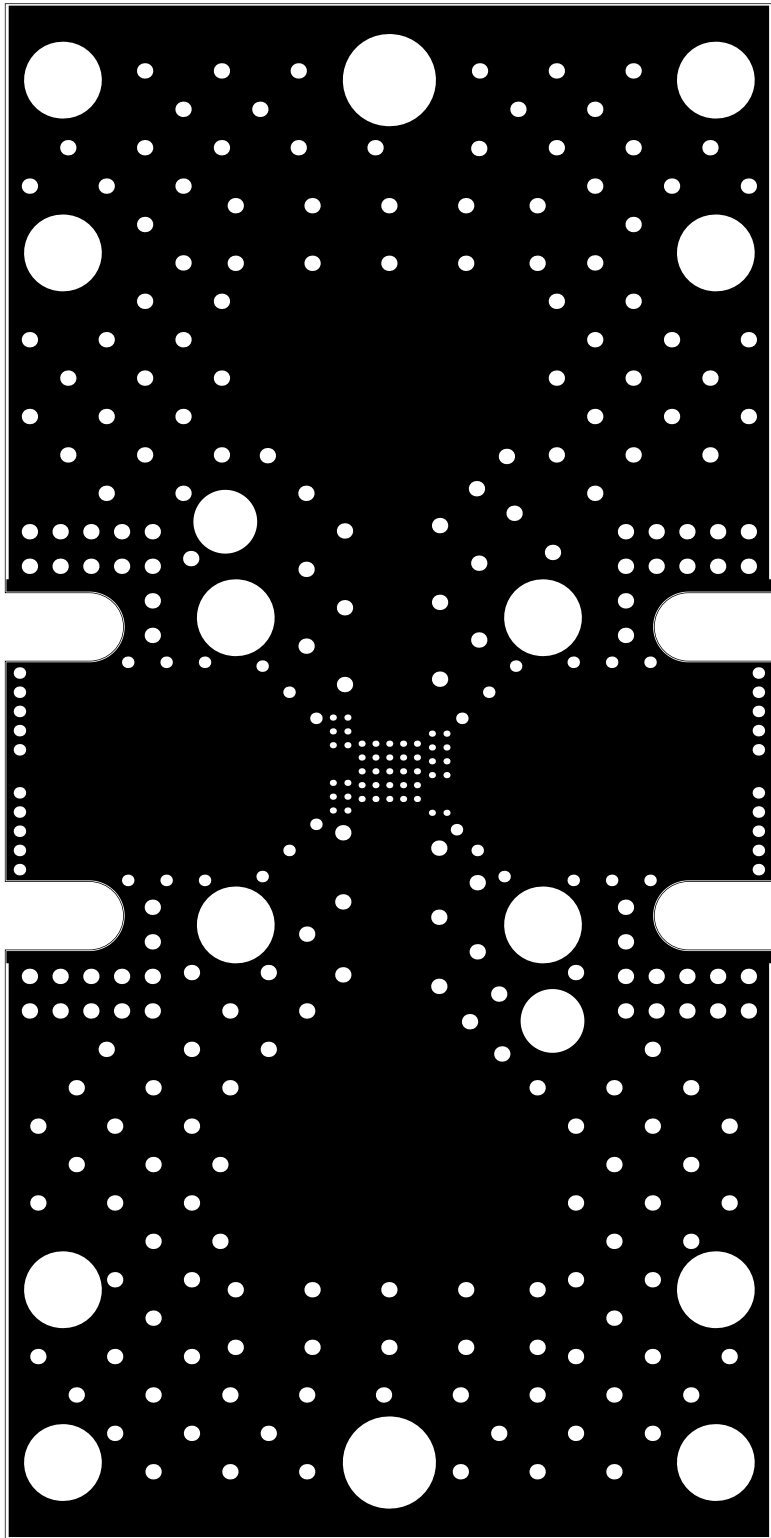
B

A

METAL1\_TOP



METAL2\_BOT



D

C

B

A

THIS DOCUMENT IS CONFIDENTIAL AND REPRESENTS  
PROPRIETARY INFORMATION, THE PROPERTY OF QORVO  
AND SHALL NOT BE REPRODUCED IN ANY MANNER  
NOR USED FOR ANY PURPOSE WHATSOEVER,  
EXCEPT AS SPECIFIED IN WRITING BY QORVO

SIZE	CAGE CODE	DWG. NO.	REV.
B	1CVM1	TGP2615-SM-4000	A
SCALE: 1:1		SHEET 3 OF 5	

4

3

2

1

4

3

2

1

D

D

C

C

B

B

A

A

SILKSCREEN\_TOP

TGP2615-SM-4000(A)

SAP# 283343

P1

B1

B2

B3

RFIN

RFOUT

J1

J2

P2

B3

B4

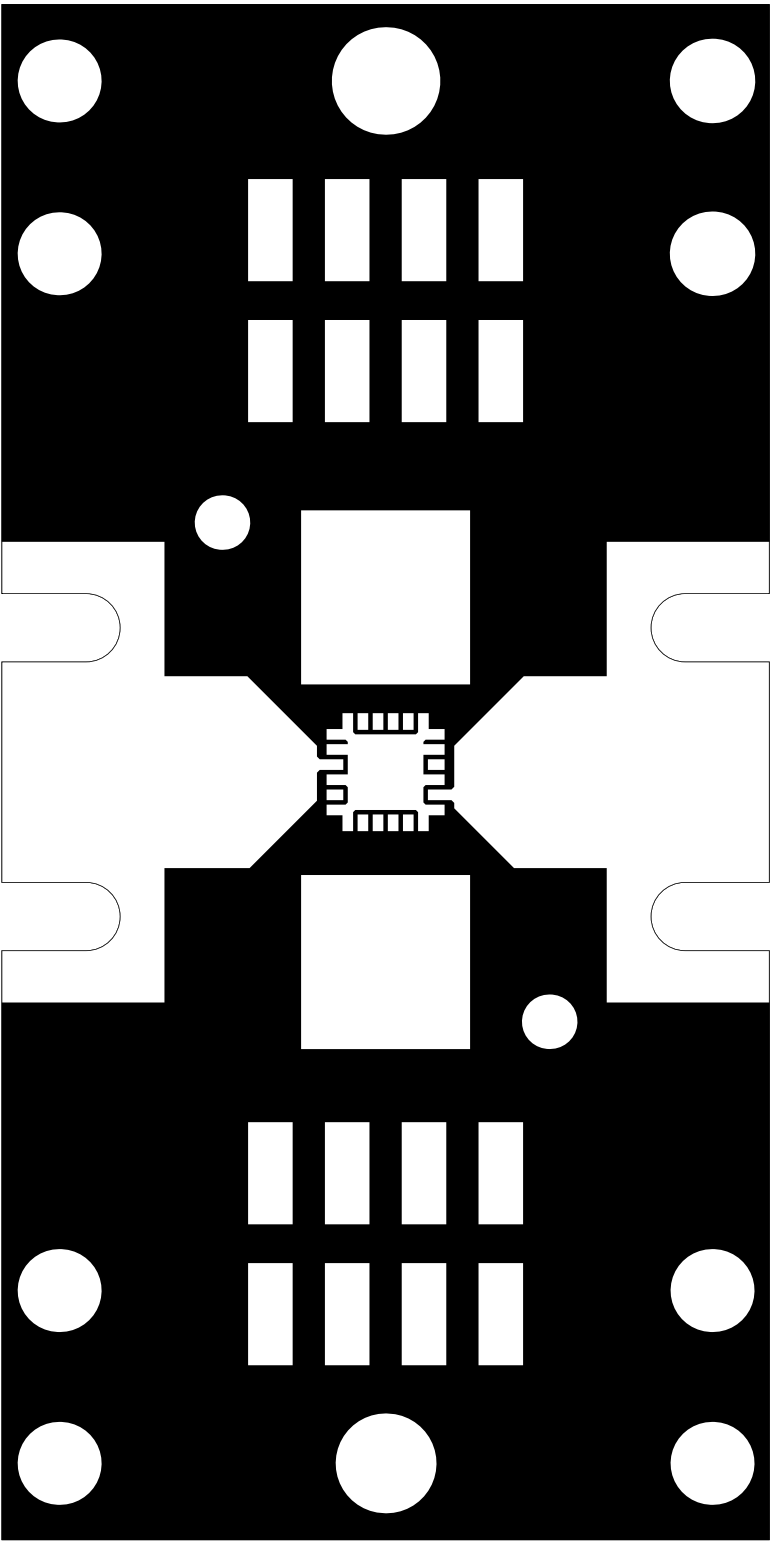
B5

B6

QORVO

5/7/17

SOLDERMASK\_TOP



THIS DOCUMENT IS CONFIDENTIAL AND REPRESENTS  
PROPRIETARY INFORMATION, THE PROPERTY OF QORVO  
AND SHALL NOT BE REPRODUCED IN ANY MANNER  
NOR USED FOR ANY PURPOSE WHATSOEVER,  
EXCEPT AS SPECIFIED IN WRITING BY QORVO

SIZE	CAGE CODE	DWG. NO.	REV.
B	1CVM1	TGP2615-SM-4000	A
SCALE: 1:1		SHEET 4 OF 5	

4

3

2

1

4

3

2

1

D

D

C

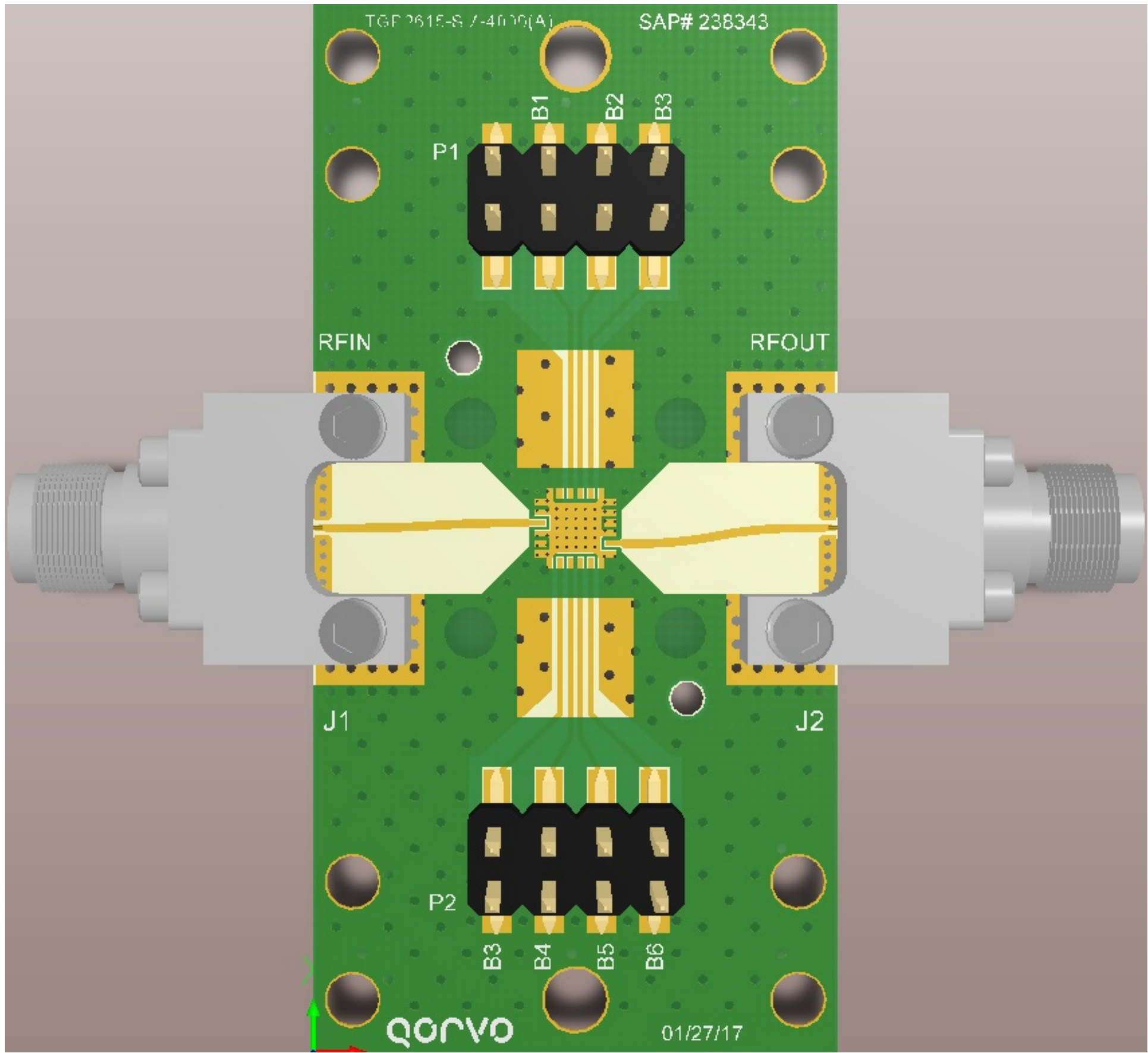
C

B

B

A

A



THIS DOCUMENT IS CONFIDENTIAL AND REPRESENTS  
PROPRIETARY INFORMATION, THE PROPERTY OF QORVO  
AND SHALL NOT BE REPRODUCED IN ANY MANNER  
NOR USED FOR ANY PURPOSE WHATSOEVER,  
EXCEPT AS SPECIFIED IN WRITING BY QORVO

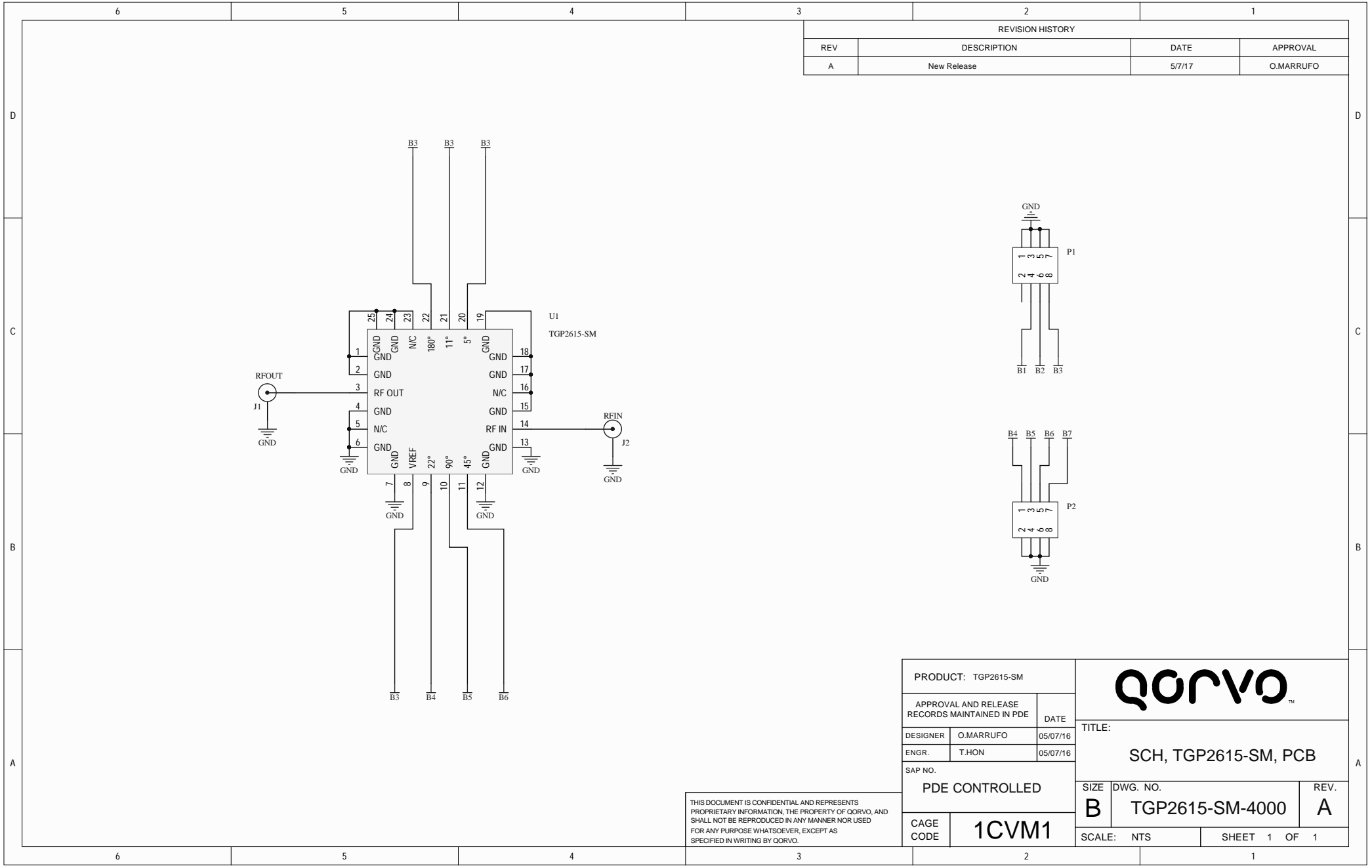
SIZE	CAGE CODE	DWG. NO.	REV.
B	1CVM1	TGP2615-SM-4000	A
SCALE: 1:1		SHEET 5 OF 5	

4

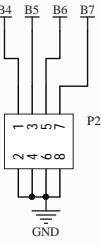
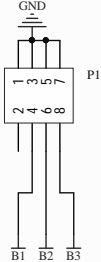
3


2

1



REVISION HISTORY			
REV	DESCRIPTION	DATE	APPROVAL
A	New Release	5/7/17	O.MARRUFO



PRODUCT: TGP2615-SM					
APPROVAL AND RELEASE RECORDS MAINTAINED IN PDE		DATE			
DESIGNER	O.MARRUFO	05/07/16	TITLE:  SCH, TGP2615-SM, PCB		
ENGR.	T.HON	05/07/16			
SAP NO.			SIZE DWG. NO. REV. B TGP2615-SM-4000 A		
PDE CONTROLLED					
CAGE CODE	1CVM1		SCALE: NTS SHEET 1 OF 1		

THIS DOCUMENT IS CONFIDENTIAL AND REPRESENTS PROPRIETARY INFORMATION, THE PROPERTY OF QORVO, AND SHALL NOT BE REPRODUCED IN ANY MANNER NOR USED FOR ANY PURPOSE WHATSOEVER, EXCEPT AS SPECIFIED IN WRITING BY QORVO.